



# Supersonic yield potential



**Most widely grown**  
HRW wheat in the PNW



**National Wheat Yield Contest**  
winner – Bin Buster  
4 of the last 5 years

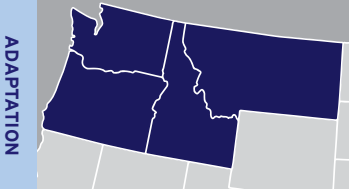


**Trial-topping yield**  
in OSU, UI  
and WSU



**Excellent tolerance** to  
strawbreaker foot rot

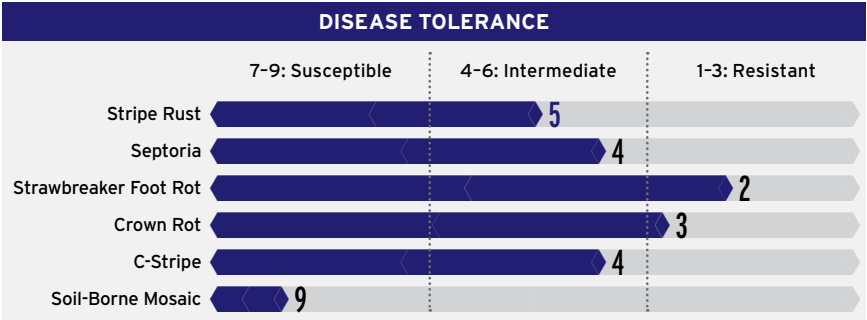
## HARD RED WINTER WHEAT LCS Jet



|                           | YIELD      |                    | MEAN            |
|---------------------------|------------|--------------------|-----------------|
|                           | BU/AC      | LCS Jet Trial Avg. |                 |
| 2020 OSU Low Rain         | 78<br>65   |                    | 120%<br>of mean |
| 5-Year WSU 12-16"         | 103<br>90  |                    | 114%<br>of mean |
| 5-Year WSU < 12"          | 60<br>53   |                    | 113%<br>of mean |
| 5-Year WSU > 16"          | 126<br>117 |                    | 108%<br>of mean |
| 2-Year OSU High Rain      | 126<br>117 |                    | 108%<br>of mean |
| 3-Year UI South Irrigated | 160<br>149 |                    | 107%<br>of mean |
| 3-Year UI South Dryland   | 47<br>44   |                    | 107%<br>of mean |
| 2-Year UI North           | 129<br>122 |                    | 106%<br>of mean |

|                       | AGRONOMIC FEATURES |           |                   |
|-----------------------|--------------------|-----------|-------------------|
|                       | LCS Jet            | Keldin    | SY Clearstone CL+ |
| Test Weight           | 61.6               | 63.6      | 61.7              |
| Protein %             | 10.8               | 11.0      | 11.9              |
| Winter-Hardiness      | Very Good          | Excellent | Excellent         |
| Heading (Julian)      | 153                | 154       | 151               |
| Plant Height (Inches) | 32                 | 34        | 38                |
| Straw Strength        | Very Good          | Average   | Very Good         |

2020 average | All available public and private data used in compiling scores



All available public and private data used in compiling scores

| Overall Quality | END-USE QUALITY |                |                 |
|-----------------|-----------------|----------------|-----------------|
|                 | Baking Quality  | Flour Protein  | Milling Quality |
| Desirable       | Acceptable      | Less Desirable | Desirable       |

Data obtained from LCS Quality Laboratory