



Shockingly high yields



Exceptional yield
in UI South trials
4 years running



Excellent
stripe rust tolerance



Good
straw strength



Heavy test weight
and desirable
end-use quality

SOFT WHITE WINTER WHEAT VI Shock

ADAPTATION



YIELD

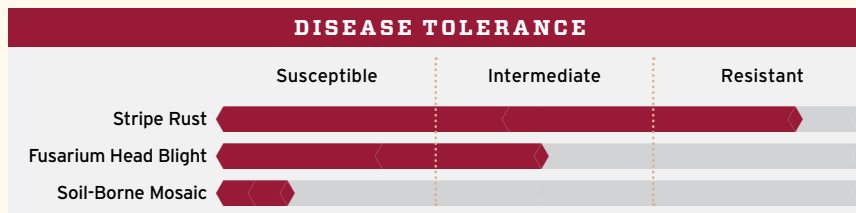
	BU/AC	VI Shock	Trial Avg.	MEAN
2021 UI South	143			106% of mean
	135			
2020 UI South	162			112% of mean
	145			
2019 UI South	183			111% of mean
	165			
2018 UI South	155			110% of mean
	141			
2-Year UI South	153			109% of mean
	140			
3-Year UI South	163			110% of mean
	148			
4-Year UI South	161			110% of mean
	146			

AGRONOMIC FEATURES

	VI Shock	SY Ovation	Stephens	WB 1529
Test Weight	58.7	59.2	58.0	60.8
Winter-Hardiness	Good	Good	Below Avg.	Good
Heading (Julian)	153	153	153	152
Plant Height (inches)	38	38	38	36
Straw Strength	Very Good	Very Good	Very Good	Very Good

Southern Idaho 4-year average | All available public and private data used in compiling scores

DISEASE TOLERANCE



All available public and private data used in compiling scores

END-USE QUALITY

Overall Quality	Baking Quality	Flour Protein	Milling Quality
Desirable	Desirable	Desirable	Desirable

Data obtained from the LCS and UI Quality Laboratories



Hannah Kammeyer } PNW Regional Commercial Manager

503.519.7075

hannah.kammeyer@limagrains.com

LimagrainsCerealSeeds.com

For all available data, visit LimagrainsCerealSeeds.com



Unauthorized seed multiplication prohibited by law.
U.S. Plant Variety Protection Number has been applied for.